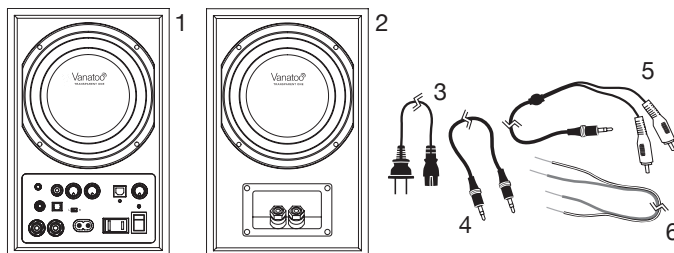


Quick Start Guide

1 Unpack your system

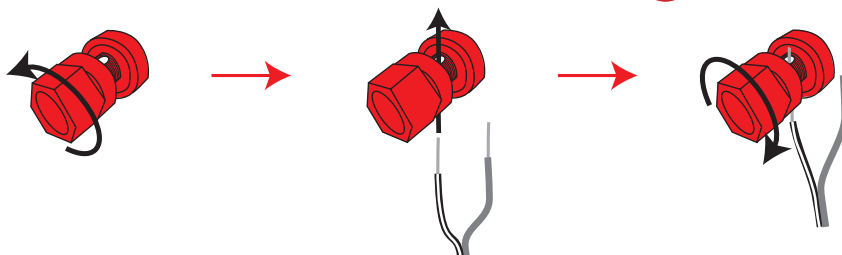
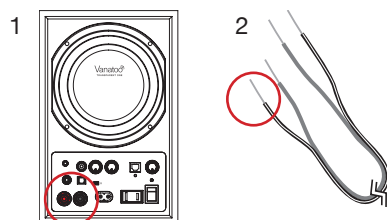
1. Active speaker
2. Passive speaker
3. AC power cable
4. 3.5 mm to 3.5 mm cable
5. 3.5 mm to RCA "Y" cable
6. Speaker wire



2 Connect the speaker wire

Connect the speaker wire to the active speaker

1. Locate the red and black terminals on the active speaker.
2. Locate the length of speaker wire with the white stripe.
3. Connect the wire with the **white stripe** to the **red terminal**:



Turn screw cap counter clockwise until the hole in the inside post is fully visible.

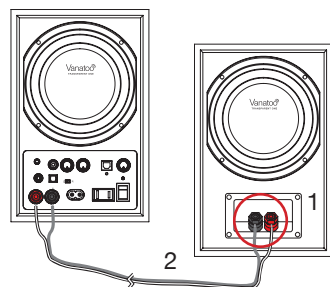
Thread the exposed wire through the hole until the top of the wire clears the hole. It might be easier to thread upwards from the bottom.

Hold the wire in place, and with your other hand, turn the screw cap clockwise to tighten the screw cap back down until the wire is securely in place.

4. Connect the wire with the **unmarked insulation (no white stripe)** to the **black terminal** using the same process.

Connect the other end of the speaker wire to the passive speaker

1. Locate the red and black terminals on the passive speaker.
2. Repeat the steps performed on the active speaker. Make sure terminals of the same color are connected using wires with the same marking (**e.g. striped wire on the red terminals, and non-striped wire on the black terminals**).



⚠ WARNINGS



To prevent the possibility of shorting the terminals, make sure the exposed sections of speaker wire do not touch during installation or operation.



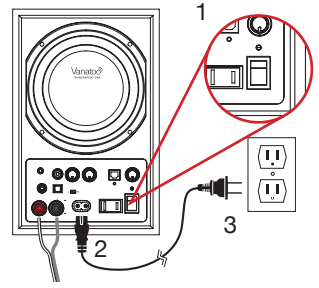
When tightening the speaker terminal screw caps, make sure that **only the exposed** speaker wire is clamped between. This will create a secure working connection.



The speaker terminals on the active speaker are **OUTPUTS**. **DO NOT** connect the output terminal of a stereo amplifier to these terminals.

3 Connect the power cable

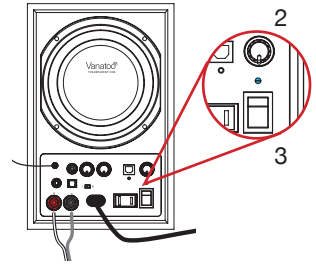
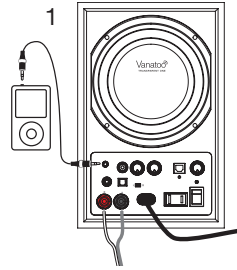
1. Check that the power switch on the active speaker is in the OFF position.
2. Plug the AC power cord into the AC Input connector on the active speaker.
3. Plug the power cord into an AC power wall outlet.



4 Connect your audio source

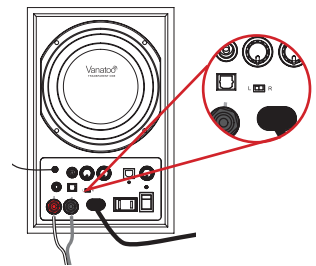
This Quick Start Guide uses an MP3 player, but connecting other analog and digital audio devices (using the digital inputs) follow these same basic steps.

1. Plug one end of the 3.5mm cable into the Audio Out (i.e. 'Headphone Out') connection on the MP3 player and the other end into the analog input connector on the back of the active speaker.
2. Turn the volume knob on the active speaker to minimum (counterclockwise).
3. Turn on the active speaker. The blue LED light will light up, indicating that the unit is on.
4. Set your volume (you'll set the speaker volume once, and use the volume control on your audio device to control volume).
 - Turn on your MP3 player and set the volume to $\frac{3}{4}$ maximum.
 - Turn up the active speaker volume to the maximum loudness you think you'll want for the majority of your listening.
5. Adjust the volume on your MP3 player to the level that you want to hear right now.



5 Designate Left-Right speaker

Set the Left-Right switch to designate whether the active speaker is located to your right or left (as you face the speakers). This ensures the music is recreated as it was recorded.



CONGRATULATIONS!! That's it!
We hope you enjoy your Vanatoo Transparent One powered speakers.

For additional setup information, connectivity options, and the troubleshooting guide, check out the Transparent One Owner's Guide or visit us at www.vanatoo.com.

Want to play your music wirelessly? Check out how at www.vanatoo.com.

Contact Us

Email: support@vanatoo.com